

J.JP.JPD. 両口金タイプ

Double Ended



R7s Base

品名 Lamp Type	ANSI	定格電圧(V) Rated Voltage	消費電力(W) Power Consumption	寸法(mm) Dimensions			全光束(lm) Light Output	色温度(K) CCT	定格寿命(h) Rated Life	フィラメント タイプ Filament Type	点灯方向 Burning Position	Fig. No.
				A(Max.)	B(Max.)	C						
J 100V 150W		100	150	119.6	114.2	9	2400	2900	2000	C-8	HORIZ	1
J 100V 300W		100	300	119.6	114.2	9	5900	2950	2000	C-8	HORIZ	1
J 100V 500W		100	500	119.6	114.2	12	11000	3000	2000	C-8	HORIZ	1
J 220V 300W		220	300	119.6	114.2	9	5000	2900	2000	C-8	HORIZ	1
JP 100V 300WC		100	300	119.6	114.2	12	7500	3200	100	C-8	HORIZ	1
JP 100V 500WB		100	500	119.6	114.2	12	11200	3050	500	C-8	HORIZ	1
JP 100V 500WC		100	500	119.6	114.2	12	13000	3200	100	C-8	HORIZ	1
JP 100V 500WBF※		100	500	119.6	114.2	12	11000	3050	500	C-8	HORIZ	1
JP 100V 500WCF※		100	500	119.6	114.2	12	12250	3200	200	C-8	HORIZ	1
JP 100V 750WB		100	750	119.6	114.2	12	15800	3050	1500	C-8	HORIZ	1
JP 100V 750WC		100	750	119.6	114.2	12	17000	3100	400	C-8	HORIZ	1
JP 100V 750WBF※		100	750	119.6	114.2	12	15500	3050	1500	C-8	HORIZ	1
JP 100V 750WCF※		100	750	119.6	114.2	12	16700	3100	400	C-8	HORIZ	1
JP 100V 1000WB		100	1000	119.6	114.2	12	23000	3100	500	C-8	HORIZ	1
JP 100V 1000WC		100	1000	119.6	114.2	12	25000	3200	150	C-8	HORIZ	1
JP 100V 1000WBF※		100	1000	119.6	114.2	12	22500	3050	500	C-8	HORIZ	1
JP 100V 1000WCF※		100	1000	119.6	114.2	12	25000	3200	150	C-8	HORIZ	1
JPD 100V 300W C		100	300	80.3	74.9	15	7500	3200	150	CC-8	HORIZ	2
JPD 100V 500W C		100	500	80.3	74.9	15	12500	3200	150	CC-8	HORIZ	2
JPD 100V 650W C		100	650	80.3	74.9	15	16200	3200	150	CC-8	HORIZ	2
JPD 100V 1000W C		100	1000	95	89.6	18	25000	3200	200	CC-8	HORIZ	2
JPD 100V 1000W BL		100	1000	109.5	104.1	18	21000	3000	800	CC-8	HORIZ	2
JPD 100V 1000W CL		100	1000	109.5	104.1	18	25000	3200	200	CC-8	HORIZ	2
JPD 120V 650W C	FAD	120	650	80.3	74.9	15	16500	3200	100	CC-8	HORIZ	2

※ フロストバルブ Frost Bulb

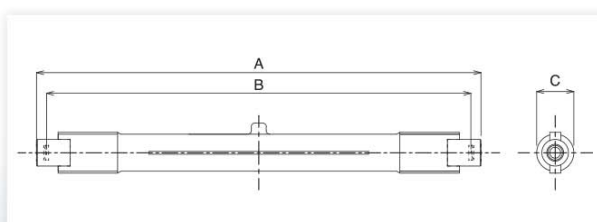


Fig.1

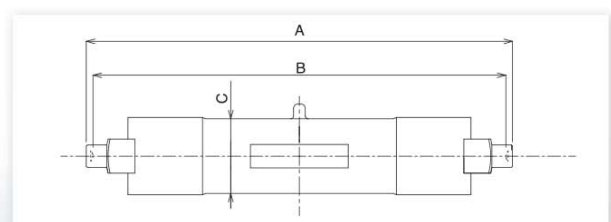


Fig.2